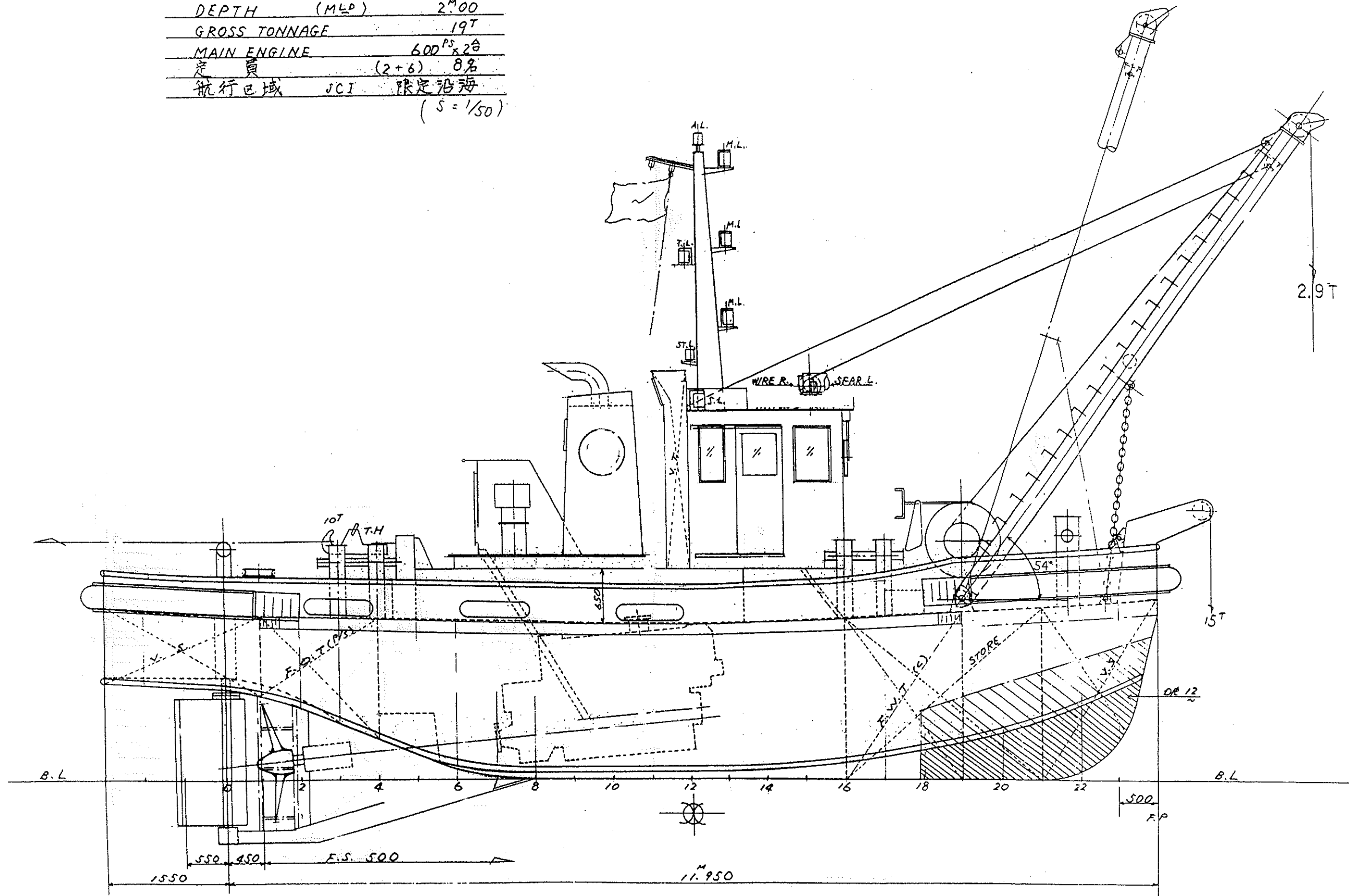


鷹丸

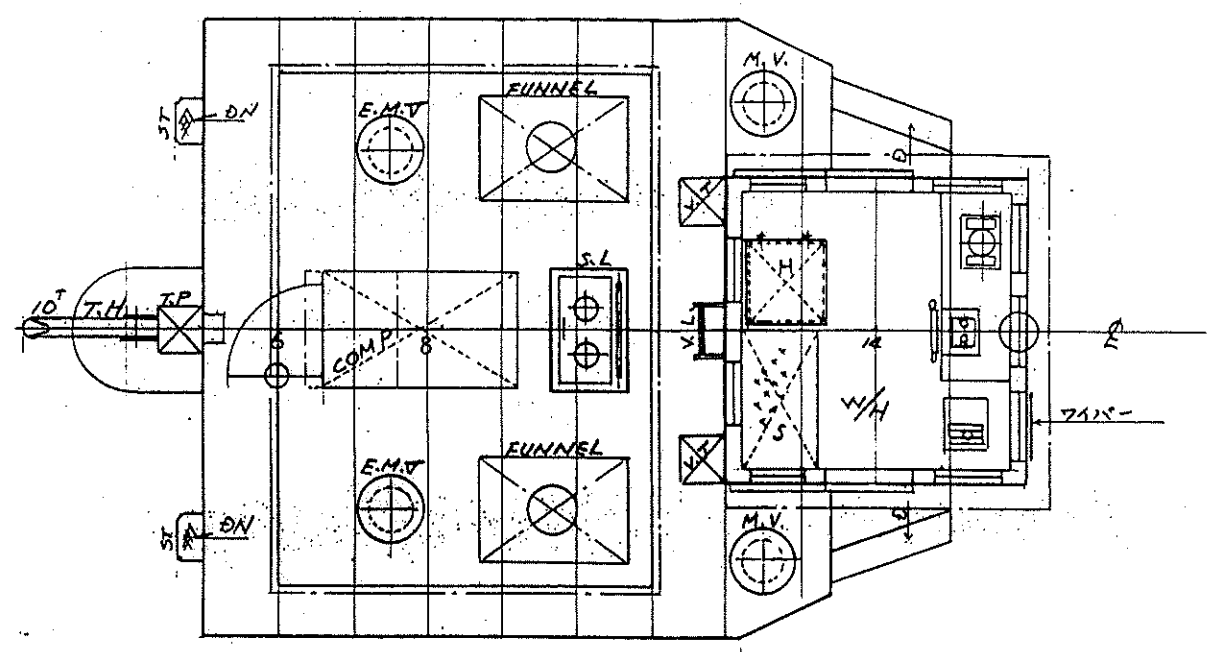
S-707 (1/2)

主要寸法

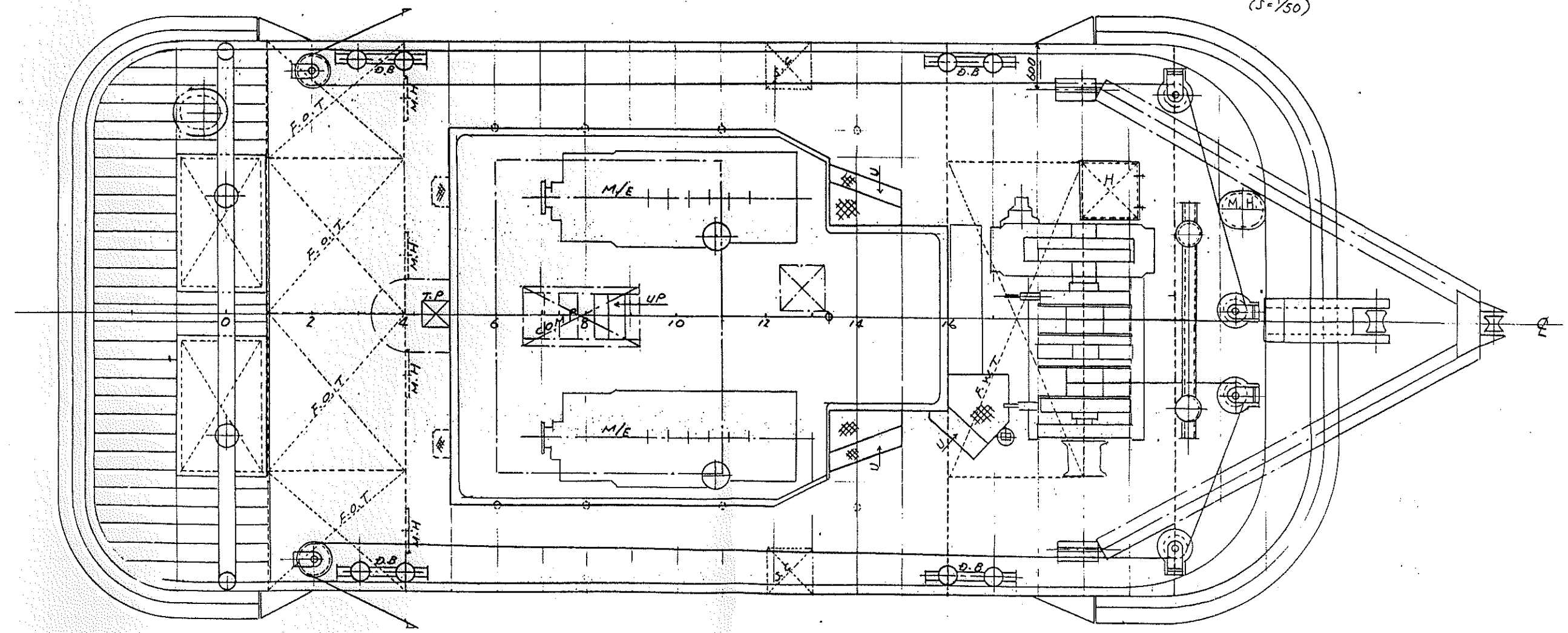
LENGTH (O.A.)	13 <sup>m</sup> 50
LENGTH (P.P.)	11 <sup>m</sup> 95
BREADTH (MLO)	6 <sup>m</sup> 00
DEPTH (MLO)	2 <sup>m</sup> 00
GROSS TONNAGE	19T
MAIN ENGINE	600 <sup>PS</sup> × 2台
定員	(2+6) 8名
航行区域	JCI 限定沿海
	(S = 1/50)



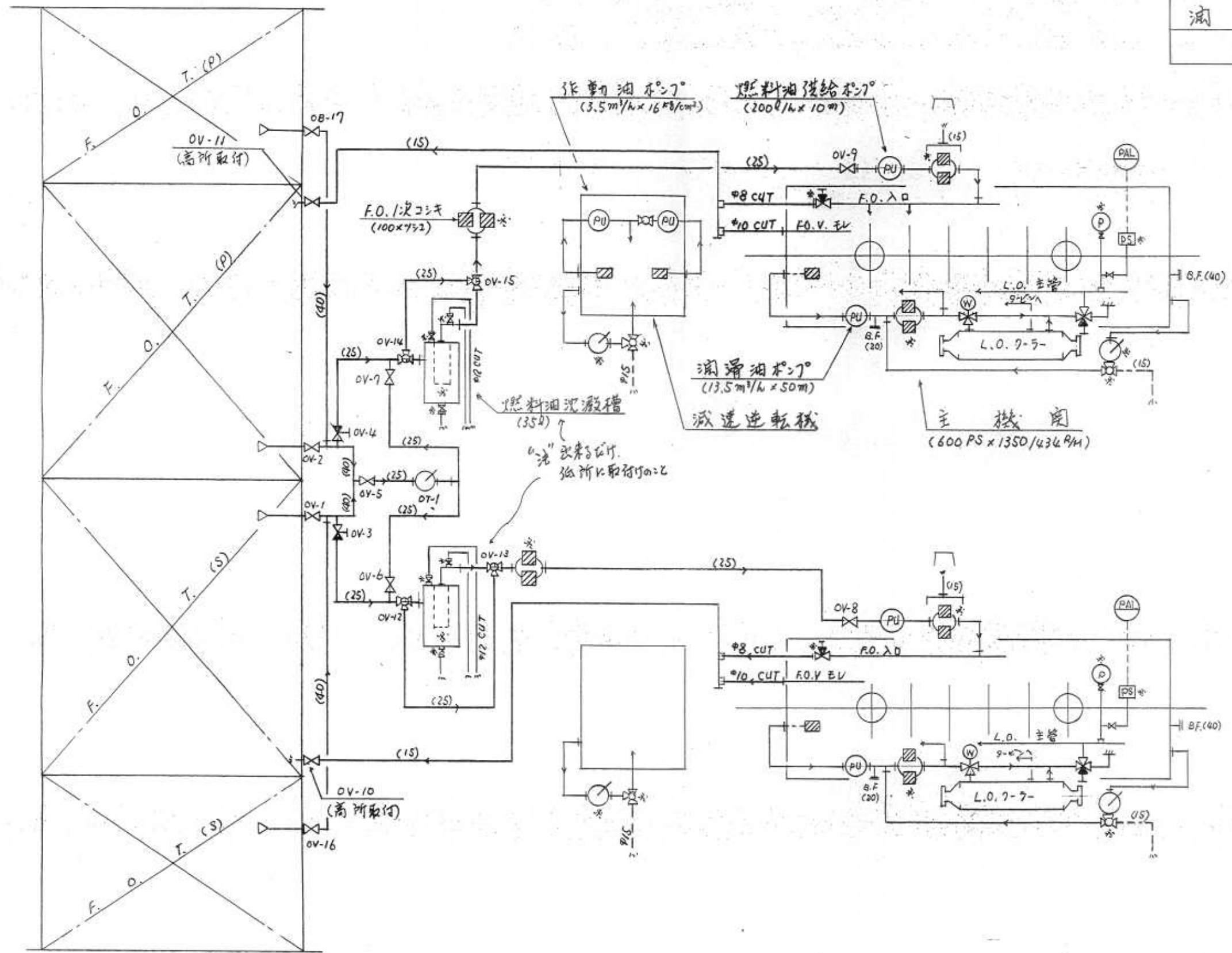
CASING TOP



UPPER DECK  
(S=1/50)



系統	記号	材料
燃料油	——	SGP(黒)
润滑油	----	SGP(黒)



燃料油, 润滑油管系統